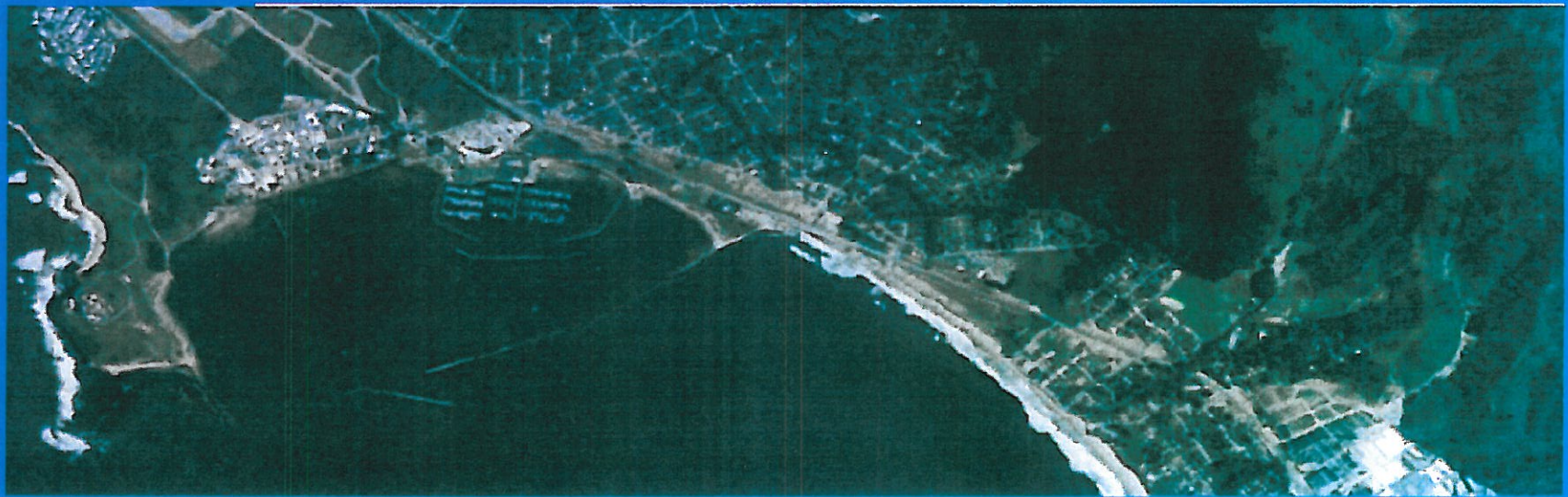


# Northern Half Moon Bay Pillar Point Harbor, CA

- Section 216 Initial Appraisal  
Review of Completed Projects
- Continuing Authorities  
Program (CAP 111) Project

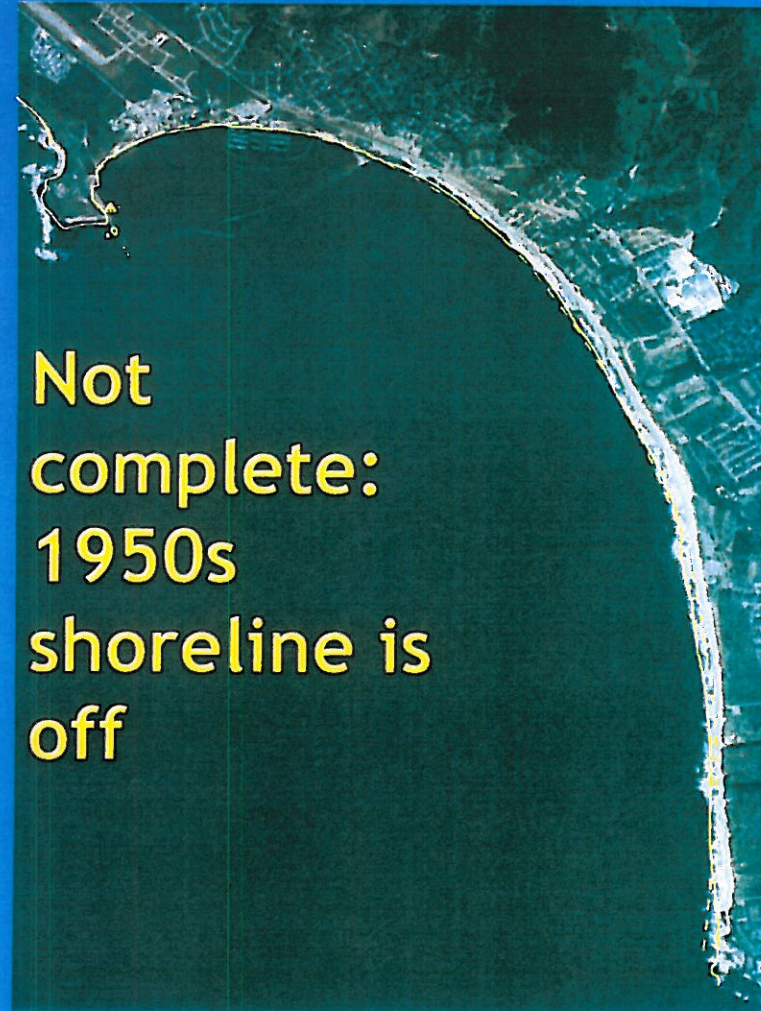
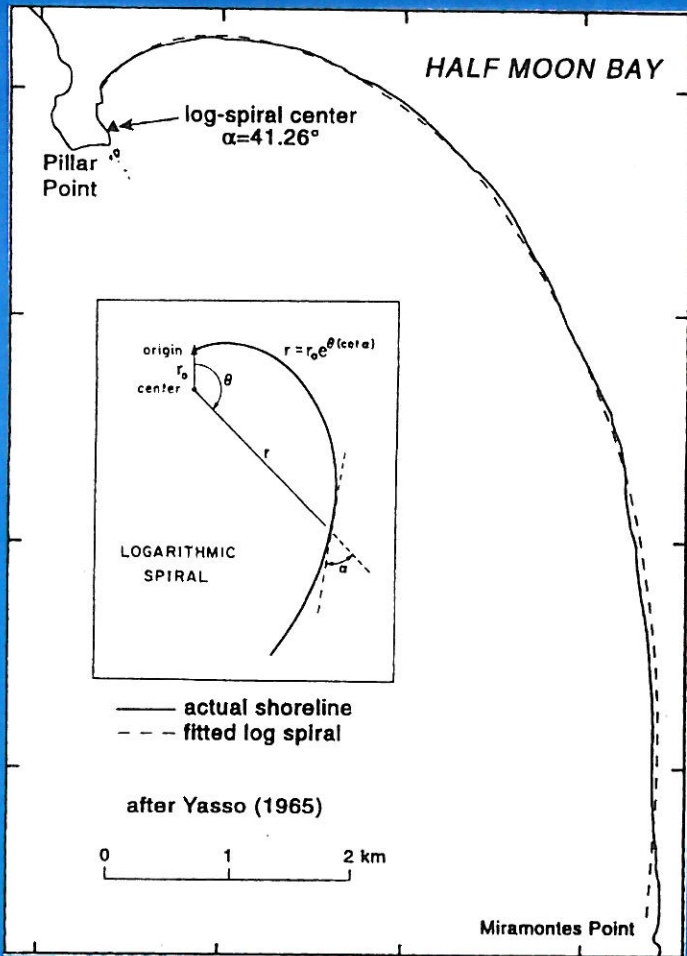
1 December 1959

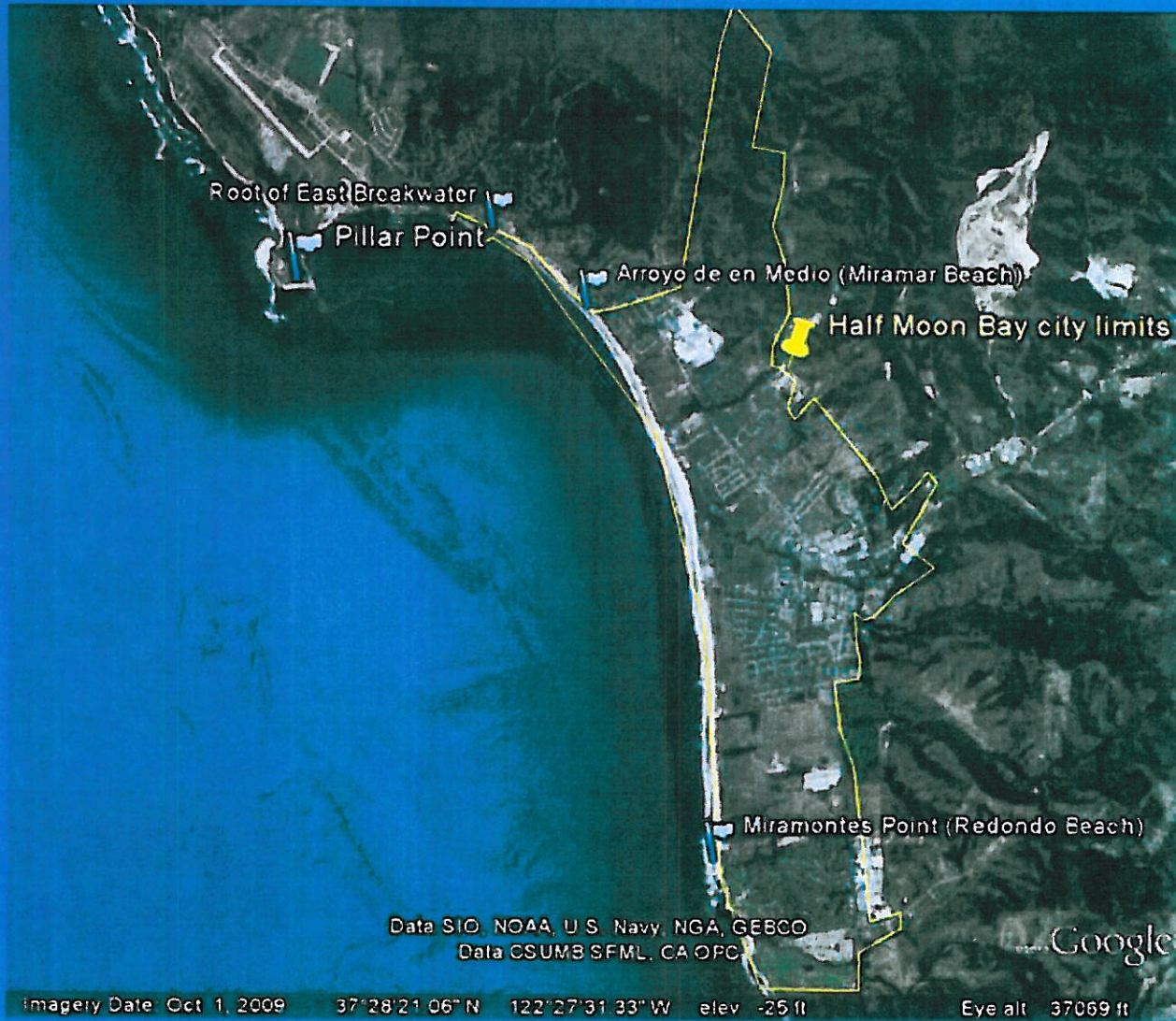


US Army Corps of Engineers  
San Francisco District



# Pre-Breakwater Shoreline





US Army Corps of Engineers  
San Francisco District





US Army Corps of Engineers  
San Francisco District



# Project Development Team

## Name

## Position

Matthew Young

Civil Engineer

Lisa Andes

Coastal Engineer

John Dingler

Project Planner

Anthony Galvin

Geotechnical Engineer

Peter LaCivita

Environmental Manager

Irene Lee

Project Manager

Arden Sansom

Economist

Jessica Soto

Cost Engineer

Frank Wu

Regional Technical Specialist,

Coastal Hydrodynamics

Robert Yang

Engineer



US Army Corps of Engineers  
San Francisco District



# Study Problem and Report Preparation

Study is assigned to District office.

Funds provided for reconnaissance study.

Feasibility study performed under cost-sharing agreement.

Results are described in a Feasibility Report and EIS.

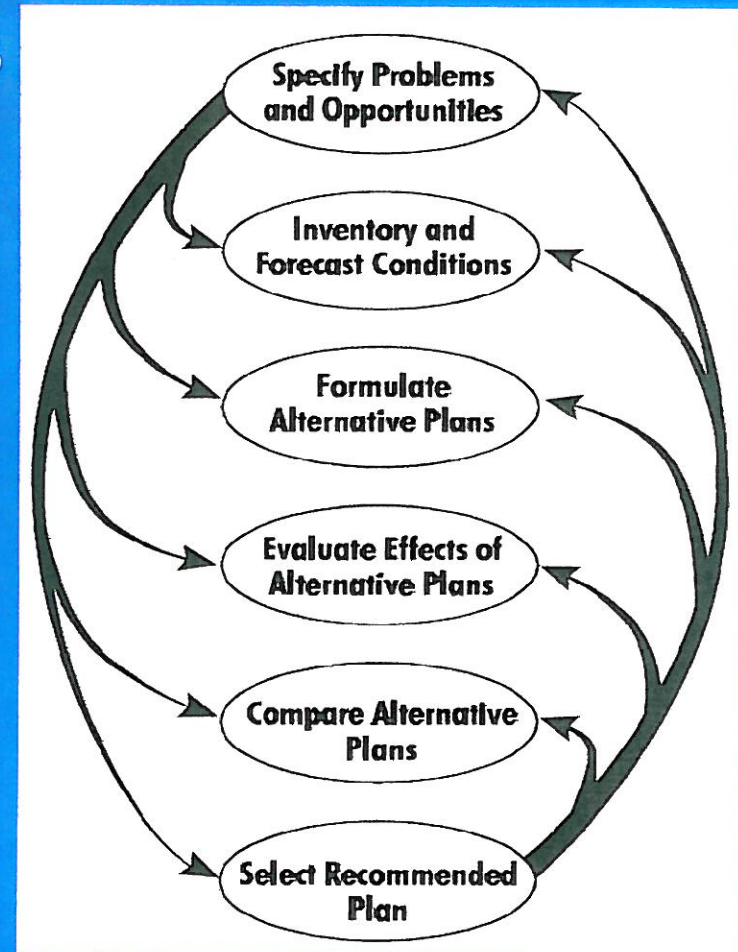


US Army Corps of Engineers  
San Francisco District



# Planning Process

- ① Problems and Opportunities
- ② Inventory and Forecast Resources
- ③ Formulating Alternative Plans
- ④ Evaluation of Alternative Plans
- ⑤ Comparison of Alternative Plans
- ⑥ Select Recommended Plan



**Project Planning**

Army Corps of Engineers  
San Francisco District



# STEP 1: Problems and Opportunities

## Identify the setting:

- Partnership
- Planning area
- Period of analysis
- Interdisciplinary team
- Stakeholders
- Public scoping meeting
- Specific problems
- Specific opportunities
- Specify planning, goals, objectives, and constraints





## STEP 2: Inventory and Forecast Resources

- Planning requires information
- External and internal factors influence the study environment
- Determine existing conditions
- Forecast conditions
- Establish Without Project Conditions!!



US Army Corps of Engineers  
San Francisco District



# Typical Process and Phases of Project Development

- CAP Section 111 Mitigation of Damages Caused by a Federal Navigation Project
- Federal cost share not to exceed \$5M
- Non-Federal Sponsor shares costs in the same proportion as costs for building the navigation project

Planning Phase		Pre-construction Engineering Design Phase	Construction Phase	Operation and Maintenance Monitoring Phase
Reconnaissance	Feasibility			
6-12 months duration	2-3 years duration	2 years duration	Duration varies	As long as project remains authorized
100% federal funding	50% federal funding 50% local funding	75% federal funding 25% local funding	65% federal funding 35% local funding	100% local funding



US Army Corps of Engineers  
San Francisco District



September 2009

BUILDING STRONG<sup>SM</sup>

# Feasibility Report Purposes:

- ∞ Serves as a Decision Document to convince the Office of Management and Budget (OMB) of project viability
- ∞ Is an Authorization Document and is submitted to Congress for project authorization



US Army Corps of Engineers  
San Francisco District



# Feasibility Scoping Meeting (FSM)

- Reference ER 1105-2-100 Appendix G
- Mandatory meeting with the Corps Vertical Team, sponsors, agencies, and stakeholders
- Establish buy-in for Without Project Condition(s)
- Review/Update analysis yet to be done
- Present preliminary measures and an array of preliminary alternatives



US Army Corps of Engineers  
San Francisco District



# STEP 4: Evaluation of Alternative Plans

- Compare with and without project conditions
- Screen alternatives
- Evaluate alternatives and present results of:
  - Costs and Mitigation Requirements
  - Benefits (monetary and non-monetary)
  - Residual Risk for Loss of Human Life
    - (New – Section 2033 WRDA 2007)
- P&G Accounts Impacts
  - NED – National Economic Development
  - RED – Regional Economic Development
  - EQ – Environmental Quality
  - OSE – Other Social Effects



US Army Corps of Engineers  
San Francisco District



# STEP 5: Comparison of Alternative Plans

- There are different methods for comparing alternatives and their effects:
  - Monetary evaluation methods
  - Multi-criteria evaluation methods
  - Trade-off analysis
  - Goal achievement method
  - Incremental cost/cost effectiveness analysis
  - Non-monetary criteria (i.e. loss of life)
- See ER 1105-2-100 Appendices D and E



US Army Corps of Engineers  
San Francisco District

