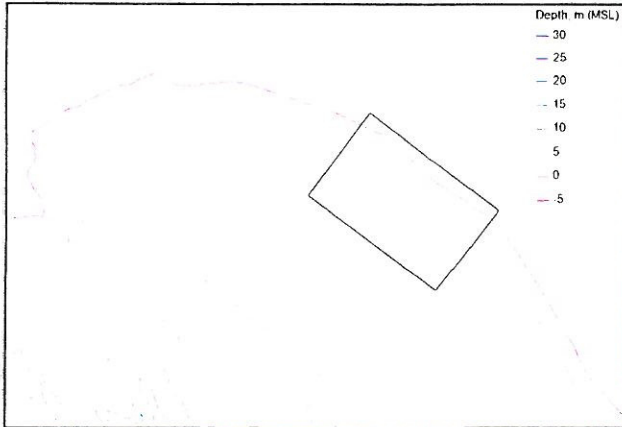
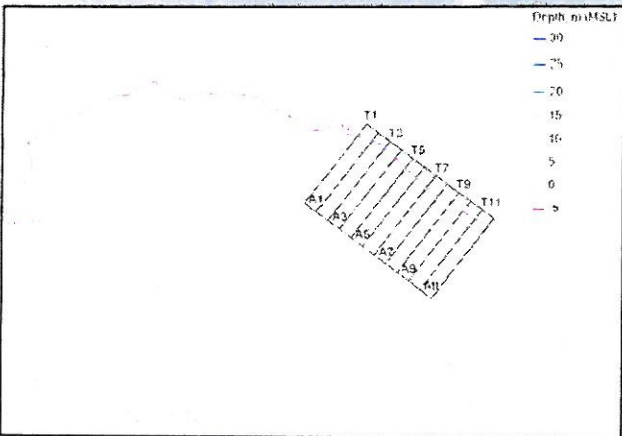


Results Summary

Pre-Breakwater Scenario



Post-Breakwater Scenario



- Model Simulations of Sediment Transport were conducted for a 1 year period between June 2009 and May 2010
- **Volume Change:**
 - Pre-Breakwater Scenario: total annual volume increase of approximately 52,000 cubic meters (68,000 cy)
 - Post Breakwater Scenario: total annual volume decrease of approximately 66,000 cubic meters (86,000 cy)
- **Shoreline Change:**
 - Pre-Breakwater Scenario: 0.6 and -0.07 m (2 and -0.2 ft)
 - Post Breakwater Scenario: -0.4 and -0.5 m (-1.2 to -1.6 ft)